

VALVE ELECTRONIC

CV2026

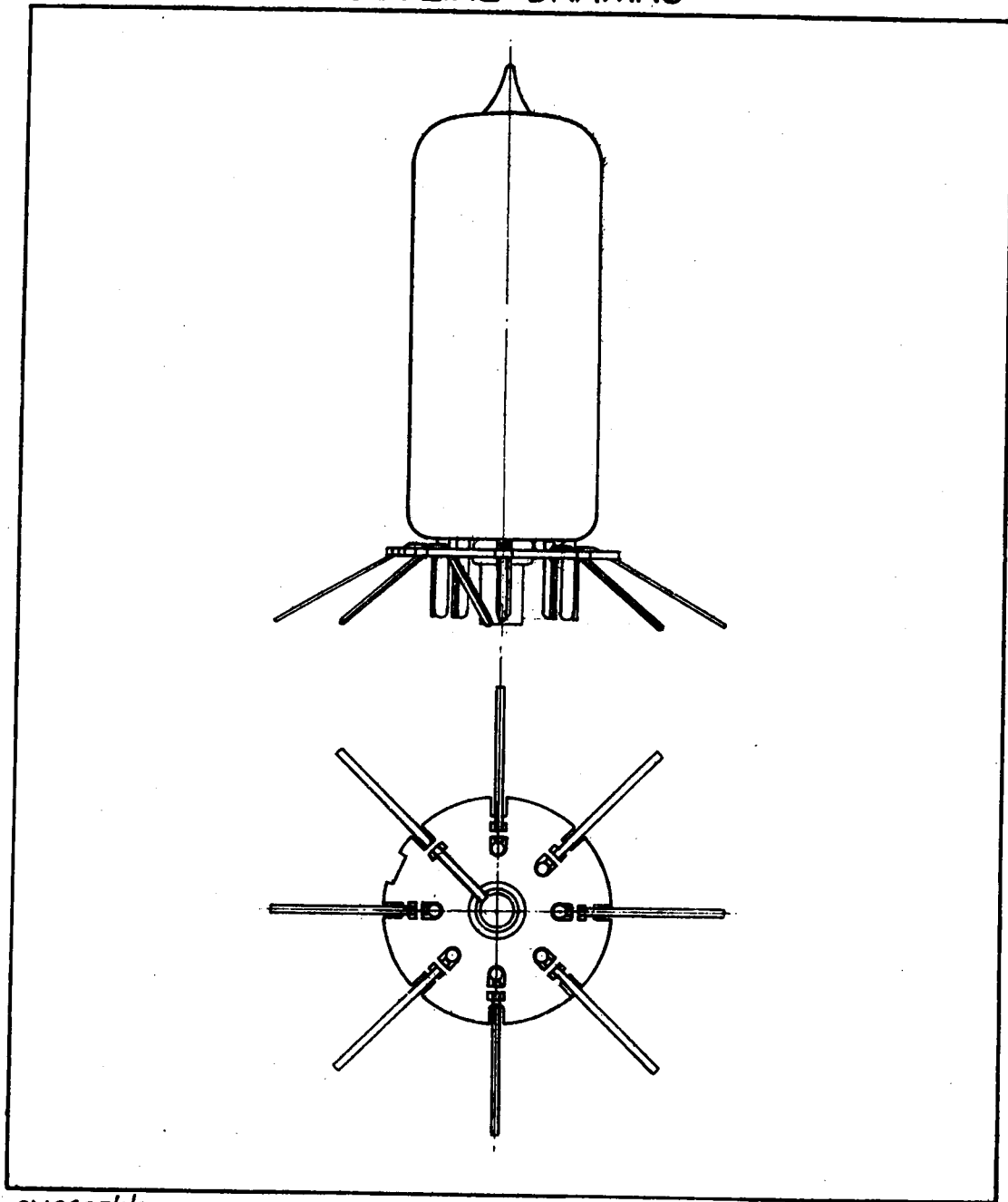
GENERAL POST OFFICE: E-IN-C (g)

Specification: GPO/CV2026 Issue 1 Dated: April 1955. To be read in conjunction with K 1001	<u>SECURITY</u>	
	<u>Specification</u> Unclassified	<u>Valve</u> Unclassified

<u>TYPE OF VALVE:</u> Variable - $\mu$ HF pentode <u>CATHODE:</u> Indirectly heated <u>ENVELOPE:</u> Glass unmetallised <u>PROTOTYPE</u> CV 454	<u>MARKING</u> See K 1001/4.1
	<u>PACKING</u> See K 1005
	<u>Base</u> B7G/B
<p>This valve is a CV 454 with tags welded to the pins and fitted with a SRRP disc, in accordance with P.O. drawing CD 712 intended for mounting in a B7G solder-in-valveholder.</p>	

CV2026

OUTLINE DRAWING



CV2026/1/2