

TUNG-SOL**CATHODE RAY**

COATED UNIPOTENTIAL CATHODE

HEATER

6.3 VOLTS 0.6 AMP.

AC OR DC

ANY MOUNTING POSITION

RECTANGULAR GLASS BULB

SMALL SHELL DUODECAL 5 PIN BASE

THE 14EP4 IS A GLASS ENVELOPE, MAGNETIC DEFLECTION AND MAGNETIC FOCUS DIRECT-VIEW PICTURE TUBE INTENDED FOR USE IN TELEVISION RECEIVERS. FEATURES OF THIS TUBE ARE THE GREY NEUTRAL-DENSITY FACEPLATE FOR INCREASED PICTURE CONTRAST AND DETAIL UNDER HIGH AMBIENT LIGHT CONDITIONS AND AN ELECTRON GUN DESIGNED TO BE USED WITH AN EXTERNAL ION-TRAP MAGNET FOR THE PREVENTION OF ION-SPOT BLEMISH. AN EXTERNAL CONDUCTIVE COATING WHEN GROUNDED SERVES AS A HIGH VOLTAGE FILTER CAPACITOR.

DESCRIPTION

| | |
|--|---------------------------|
| FLUORESCENCE AND PHOSPHORESCENCE | WHITE |
| PERSISTENCE | MEDIUM |
| DEFLECTING AND FOCUSING METHOD | MAGNETIC |
| DEFLECTION ANGLE (APPROX.): | |
| HORIZONTAL | 65 DEGREES |
| DIAGONAL | 70 DEGREES |
| FACEPLATE LIGHT TRANSMISSION (NEUTRAL DENSITY FILTER) | 66 PERCENT |
| COATING | CONDUCTIVE |
| BULB CONTACT | RECESSED SMALL CAVITY CAP |
| RASTER SIZE | 11 1/2" X 8 5/8" |

DIRECT INTERELECTRODE CAPACITANCES — APPROX.

| | | |
|--------------------------------------|-------|----|
| GRID #1 TO ALL OTHER ELECTRODES | 6 | μf |
| CATHODE TO ALL OTHER ELECTRODES | 5 | μf |
| EXTERNAL CONDUCTIVE COATING TO ANODE | 1 250 | μf |

RATINGS

INTERPRETED ACCORDING TO RMA STANDARD M8-210

| | | |
|---|--------|---------|
| HEATER VOLTAGE | 6.3 | VOLTS |
| HEATER CURRENT | 0.6 | AMP. |
| MAXIMUM ANODE VOLTAGE | 14 000 | VOLTS |
| MAXIMUM GRID #2 VOLTAGE | 410 | VOLTS |
| MAXIMUM GRID #1 VOLTAGE: | | |
| NEGATIVE BIAS VOLTAGE | 125 | VOLTS |
| POSITIVE BIAS VOLTAGE | 0 | VOLTS |
| POSITIVE PEAK VOLTAGE | 2 | VOLTS |
| MAXIMUM PEAK HEATER-CATHODE VOLTAGE: | | |
| DURING EQUIPMENT WARM-UP PERIOD | | |
| NOT EXCEEDING 45 SECONDS | 410 | VOLTS |
| AFTER EQUIPMENT WARM-UP PERIOD | 150 | VOLTS |
| HEATER POSITIVE WITH RESPECT TO CATHODE | 150 | VOLTS |
| MAXIMUM GRID #1 CIRCUIT RESISTANCE | 1.5 | MEGOHMS |

CONTINUED ON FOLLOWING PAGE

TUNG-SOL

CONTINUED FROM PRECEDING PAGE

TYPICAL OPERATING CONDITIONS AND CHARACTERISTICS

| | | |
|---|------------|-------|
| ANODE VOLTAGE | 12 000 | VOLTS |
| GRID #2 VOLTAGE | 300 | VOLTS |
| GRID #1 VOLTAGE (VISUAL EXTINCTION OF UNDEFLECTED FOCUSED SPOT) | -33 TO -77 | VOLTS |
| FOCUSING COIL CURRENT (APPROX.) | 110 ± 20% | MA. |
| ION-TRAP CURRENT (APPROX.) ^A | 110 ± 50% | MA. |
| HORIZONTAL DEFLECTING COIL CURRENT (APPROX.) | 750 | MA. |

^ASINGLE FIELD ION-TRAP MAGNET.

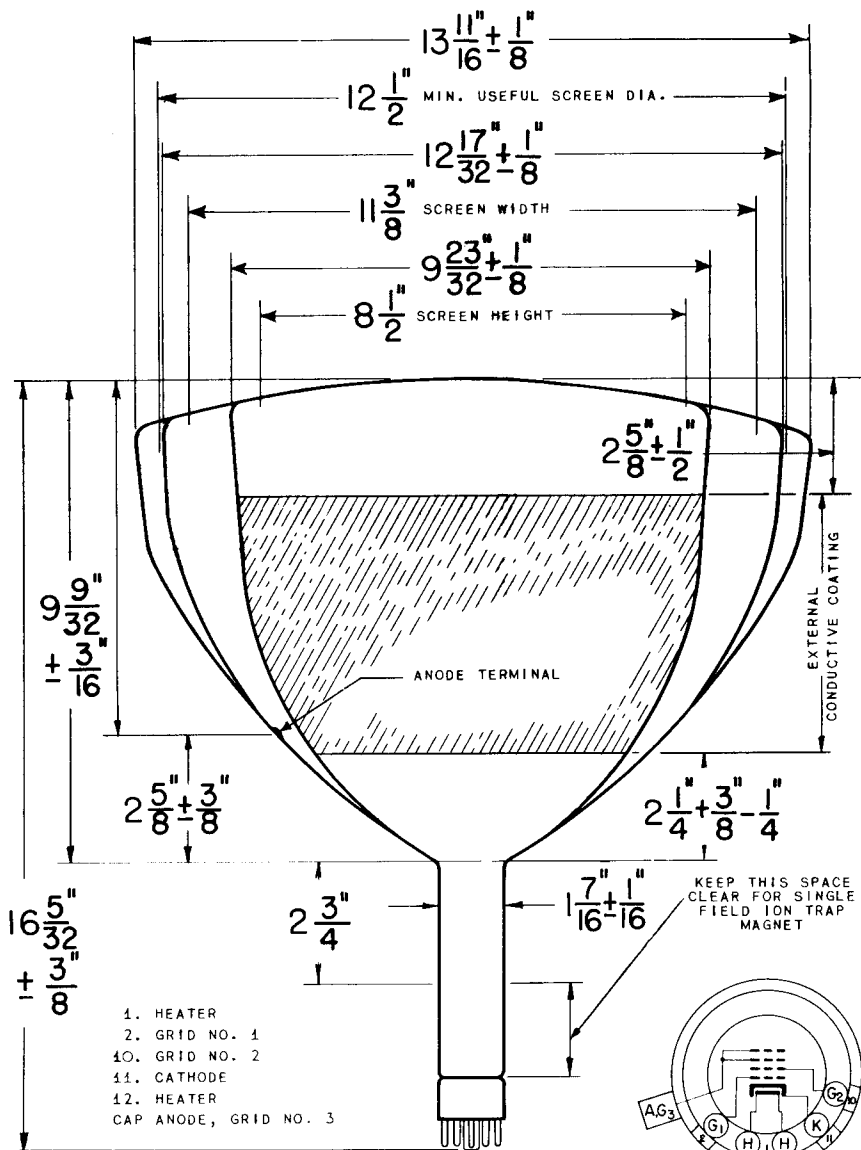


PLATE 2498
NOV. 1 1950