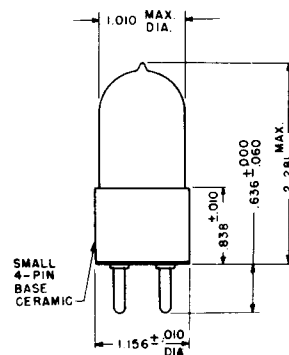


DESCRIPTION: S340 GAS TRIGGER TUBE

The Sylvania Type S340 is an inert-gas-filled internally-triggered cold cathode trigger tube designed for electronic relay and switching service. The S340 is similar to the OA5 in electrical characteristics except that it is capable of withstanding higher peak and average currents. This tube is also distinguished for its heavy duty ruggedness and ability to withstand great shock and vibrational stress and strain. It will operate satisfactorily under extremes of temperature and pressure, such as those encountered in high altitude flying. A typical application is in the ignition system of a jet engine.

MECHANICAL DATA

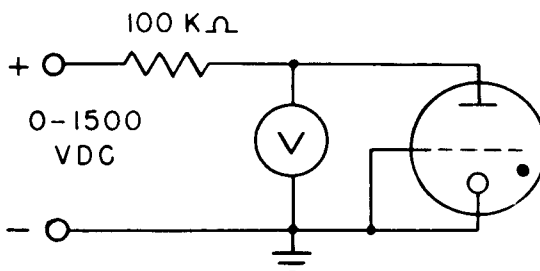
OUTLINE DRAWINGS



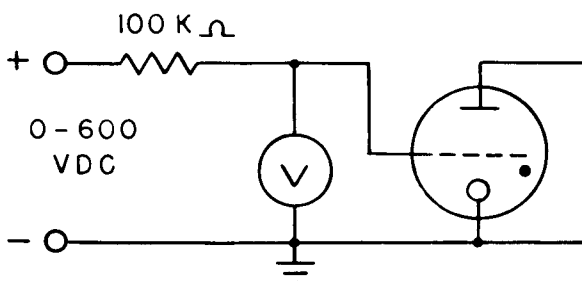
ELECTRICAL CHARACTERISTICS:	CONDITIONS	MIN.	MAX.
Trigger Voltage (E_t)		—	400 Vdc
Anode Hold Off Potential (E_{ah})	NOTE 1	1300	— Vdc
Grid Hold Off Potential (E_{gh})	NOTE 2	150	250 Vdc
Anode Operating Voltage	NOTE 3	325	1000 Vdc

NOTES:

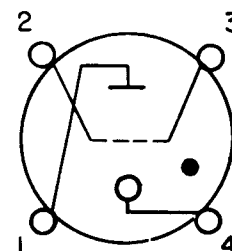
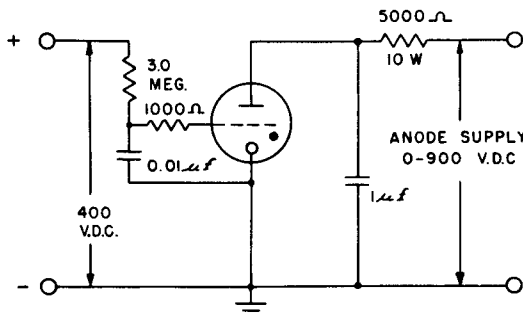
NOTE 1: E_{ah} —The voltage at which the anode conducts with the grid and cathode at ground potential as evaluated in the circuit below.



NOTE 2: E_{gh} —The voltage at which the grid conducts with the anode and cathode at ground potential as evaluated in the circuit below.



NOTE 3: Typical Operating Circuit.



BASE CONNECTIONS

(Bottom View)
 Pin 1: Plate
 Pin 2: Grid
 Pin 3: Grid
 Pin 4: Cathode