

Security Classification: Confidential

Type 2J59 Tentative
MAGNETRON

General Characteristics

Electrical

Cathode	Coated Unipotential
Filament Voltage	6.3 volts
Filament Current-	1.5 amps
Frequency Range	3256 \pm 20 Mc
Magnetic Field Strength	1500 gauss
Peak Anode Voltage	10,000 volts
Power output at .002 duty cycle and 12.5	50 watts

Mechanical

Maximum Dimensions - see outline drawing
Base Connection - see outline drawing
Mounting Position - any

Maximum Ratings

Duty Cycle*	.002
Peak anode voltage	15,000 volts
Peak anode current	15 amps
Anode dissipation	200 watts
Anode temperature	100 C degrees

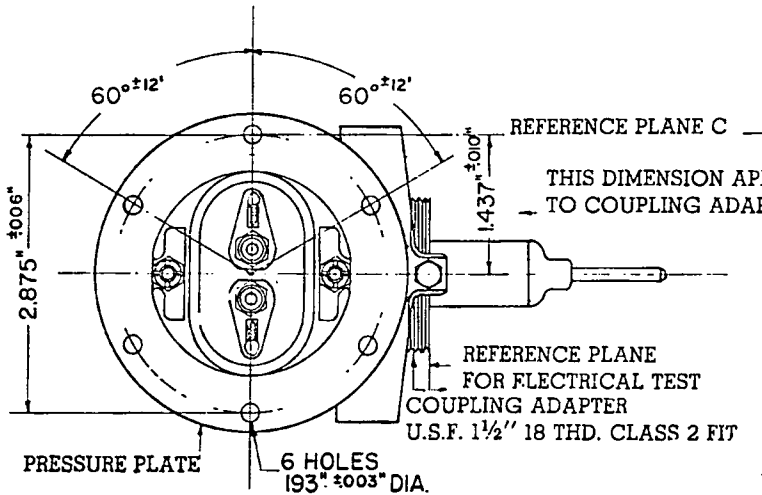
* In any 100 microsecond interval, the tube shall not be operated longer than 5 microseconds.

Sponsor: Raytheon Manufacturing Company, Power Tube Division

from RMA release # 464, Jan. 10, 1946

TECHNICAL INFORMATION
TUNABLE MAGNETRON OSCILLATOR

OUTLINE DRAWING

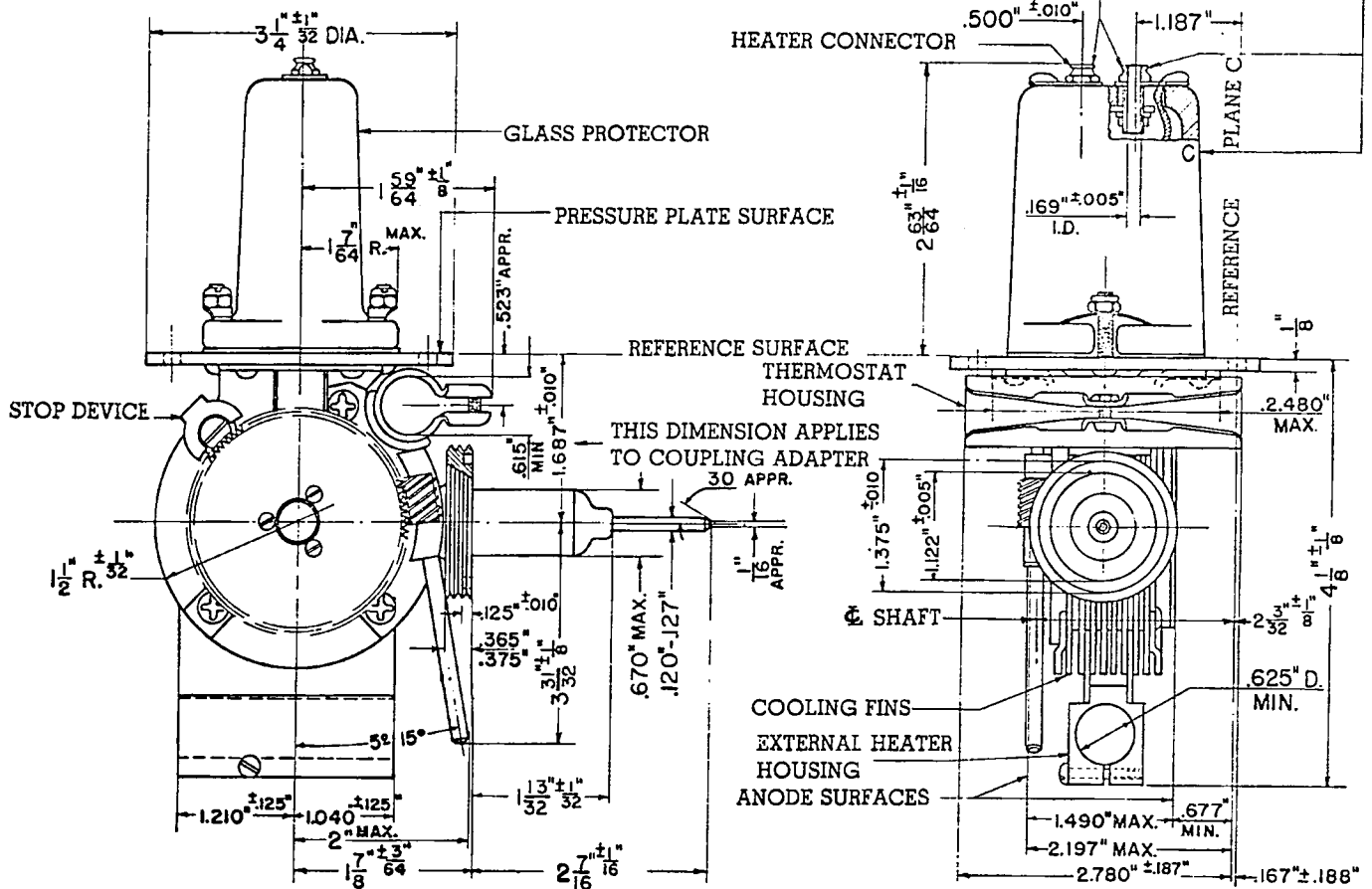


TUNING GEAR IS ASSEMBLED WITH STOP DEVICE TO PERMIT TWO TURNS (700 DEGREES) FOR TUNING. RATIO OF WORM GEAR TO TUNING GEAR 27:1.

SOLDERED JOINTS IN THE PRESSURE PLATE ARE VACUUM TIGHT SO THAT IT MAY BE USED TO PROVIDE A HERMETIC SEAL. ALL POINTS ON REFERENCE SURFACE ARE FLAT TO WITHIN .010" FOR ½" IN FROM OUTER EDGE.

COMMON HEATER CATHODE CONNECTION INDICATED BY LETTER "C"

TWO HEX. HD. PIN JACKS 19/32" LONG LOCATED WITHIN A RADIUS OF .023" OF THE LOCATION SPECIFIED WILL FIT STANDARD G. R. NO. 274 BANANA PINS



RAYTHEON MANUFACTURING COMPANY WALTHAM, MASSACHUSETTS
POWER TUBE DIVISION