

Security Classification: Confidential

Type 4J36-41  
MAGNETRON

General Characteristics

Electrical

Filament or Cathode Voltage Current	Cathode type 16 volts 3.1 amps
---	--------------------------------------

Frequency	Type	Min.	Max.
	4J36	3650	3700 Mc
	4J37	3600	3650 Mc
	4J38	3550	3600 Mc
	4J39	3500	3550 Mc
	4J40	3450	3500 Mc
	4J41	3400	3450 Mc

Field Strength	2500 gauss
Power Output	1000 watts

Mechanical

See Outline Drawing

Maximum Ratings (Peak values for duty cycle specified)

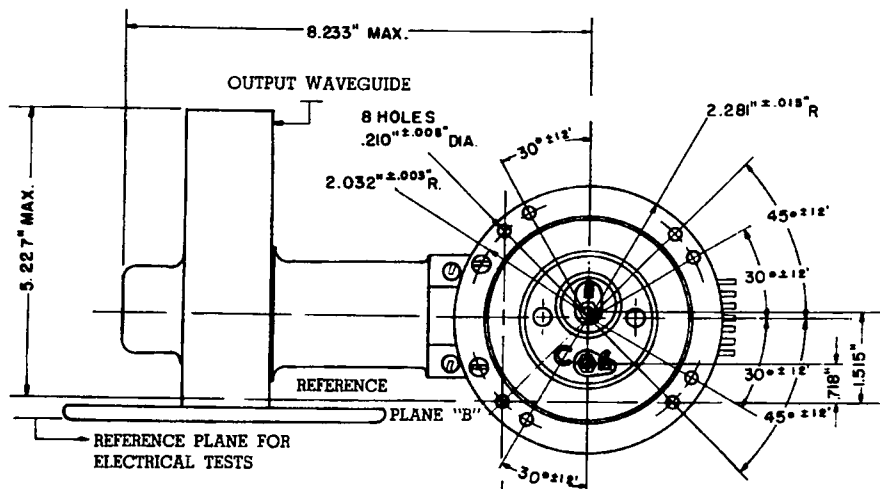
Duty Cycle	.001
Anode Voltage	30,000 volts
Anode Current	70 amps
Anode Dissipation	1200 watts
Pulse Width	2.5 microseconds

from RMA release # 456, Nov. 23, 1945

Sponsor: Raytheon Manufacturing Company, Power Tube Division

TECHNICAL INFORMATION  
MAGNETRON OSCILLATOR

OUTLINE DRAWING



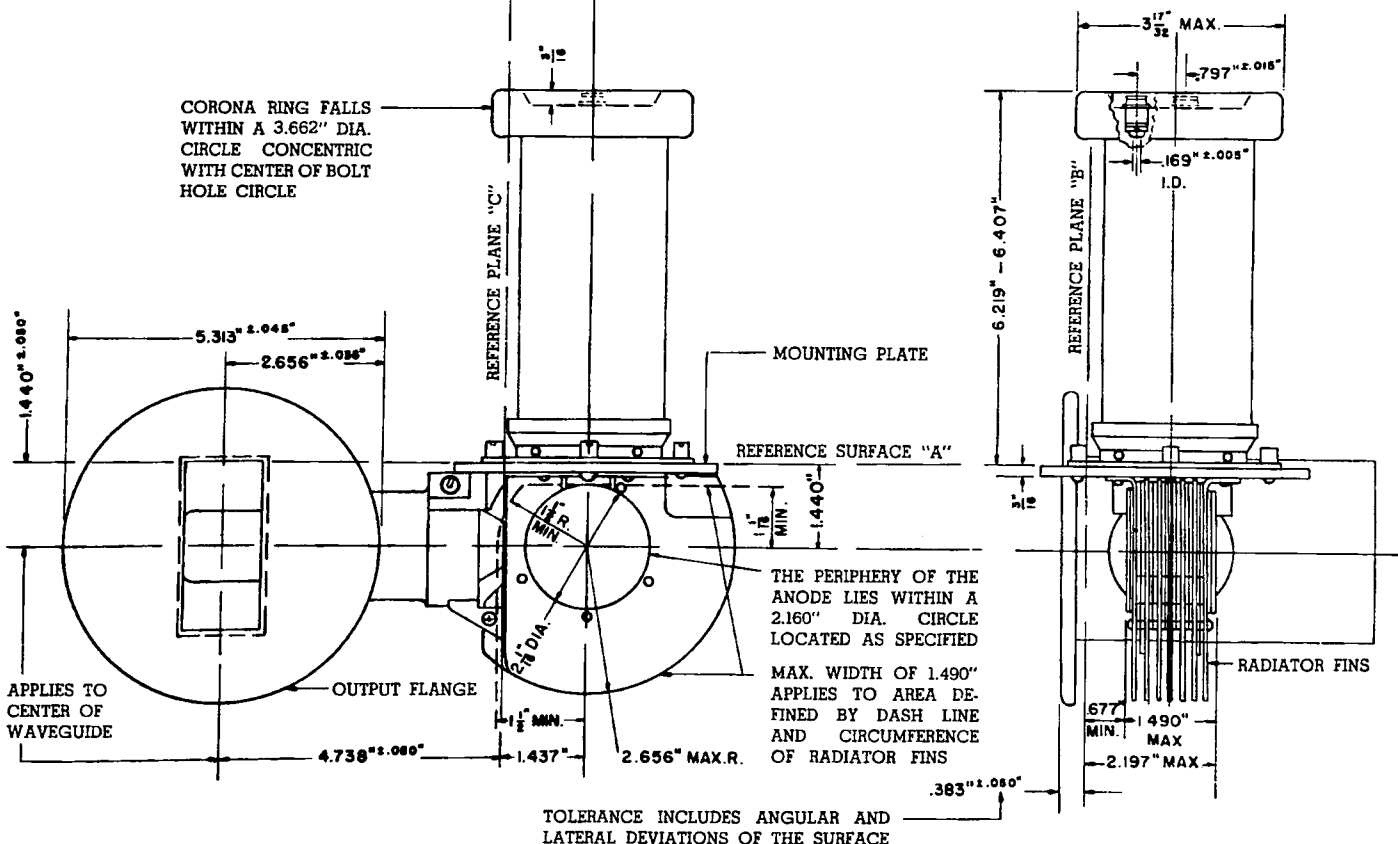
SOLDERED JOINTS IN THE MOUNTING PLATE ARE VACUUM TIGHT TO PROVIDE A HERMETIC SEAL. ALL POINTS ON REFERENCE SURFACE ARE FLAT TO WITHIN .010" FOR 1/2" IN FROM OUTER EDGE.

OUTPUT WAVEGUIDE — COMMERCIAL RECTANGULAR BRASS TUBING 1 1/2" x 3" x .080" WALL.

TWO 5/16" LOCKING TYPE PIN JACKS, 1 1/2" IN LENGTH. THEIR HOLES ARE .169" ± .005" DIA. AND WILL FIT STANDARD G.R. NO. 274 BANANA PINS.

PIN JACKS ARE WITHIN A RADIUS OF .100" OF THE LOCATION SPECIFIED.

COMMON HEATER-CATHODE CONNECTION INDICATED BY LETTER "C."



RAYTHEON MANUFACTURING COMPANY WALTHAM, MASSACHUSETTS  
POWER TUBE DIVISION