

June 18, 1951

8
3

KIP ELECTRONICS CORP.

155 WAVERLY PLACE

NEW YORK 14, N.Y.

TYPE 5935

Description: Very High Frequency Voltmeter Diode.

Mechanical Data:

Cathode: coated unipotential

Envelope: T-2 1/2 glass

Base: Glass button (6 leads: length 1.25 in. min., diam. 0.020 in.)

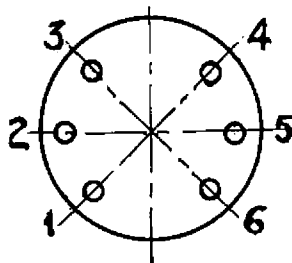
Length (Bulb and Top Lead): 1.25 in. max.

Diameter: 0.350 in. max.

Top Lead: Length 0.25 in. diam. 0.042 in. max.

Base Connection:	Lead No.:	1	2	3	4	5	6	top
	Element:	K	H	K	K	H	K	A

Bottom View:



Electrical Data:

Heater Voltage

6.3 V

Heater Current

150 mA

Tube Voltage Drop, $I_b = 3 \text{ mA}_{dc}$

10 V_{dc} approx.

Interelectrode Capacitance:

Plate to Cathode and Heater (no shield) 0.8 uuf

Resonant Frequency

1500 Mc min.

Ratings, absolute max.:

E_f	e_{px}	i_b	I_o	E_{hk}
V _{ac} or V_{dc}	V	mA	mA _{dc}	V
6.3 \pm 10%	700	1.0	0.05	0