



ADVANCE DATA

MECHANICAL DATA

General

Base	Small Wafer Octal, B8-21
Cap	Small
Output Flange	(See Drawing)
Cathode	Unipotential Oxide
Total Tuner Rotation	10-15 Turns/400 Mc
Maximum Tuning Backlash	20 Degrees
Maximum Tuning Torque	20 Ounce Inches
Cooling <sup>2</sup>	Forced Air
Mounting Position	Any

Environmental

Vibration, 50 Cycle, (Non-Operating)	10 G
Shock (Non-Operating, 11 ms)	15 G

ELECTRICAL DATA

HEATER CHARACTERISTICS

Voltage	6.3 ± 10% V
Current (at 6.3 V)	0.7 - 0.9 A

INTERELECTRODE CAPACITANCE

Reflector to All Elements and Shell (Maximum)	5.5 μuf
---	---------

RATINGS (Absolute Maximum Values)

Heater-Cathode Voltage	±45 Vdc
Resonator Voltage	825 Vdc
Reflector Voltage (Minimum)	-500 Vdc
	-15 Vdc
Cathode Current	110 mAdc
Body Temperature <sup>2</sup>	125 °C

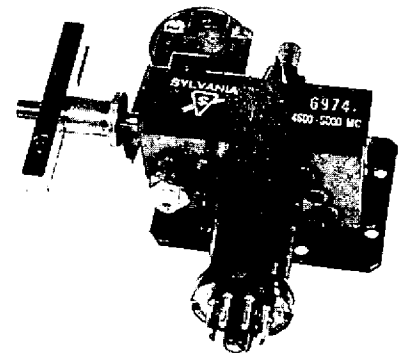
TYPICAL OPERATION (Any Frequency 4600-5000 Mc)

Conditions

Resonator Voltage	800 Vdc
Reflector Voltage <sup>3</sup>	-180 to -410 Vdc

QUICK REFERENCE DATA

Reflex Klystron  
 4600-5000 Mc  
 Over 1 Watt Output  
 Temperature Compensated  
 Integral Cavity  
 Long Life<sup>1</sup>  
 Wide Tuning Range  
 Low Distortion  
 Ideal for Remote Tuning  
 Low Tuning Torque  
 Designed for Reflector-Tuner Tracking  
 Fine Tuning



POWER CONNECTIONS

1. Shell, Resonator
  2. nc
  3. nc
  4. Cathode
  5. Heater
  6. Heater
  7. int con
  8. nc
- Cap - Reflector

SYLVANIA ELECTRIC PRODUCTS INC.

SPECIAL TUBE OPERATIONS  
 MOUNTAIN VIEW, CALIFORNIA

Prepared and Released By The  
 TECHNICAL PUBLICATIONS SECTION  
 EMPORIUM, PENNSYLVANIA

May 8, 1959  
 Page 1 of 3

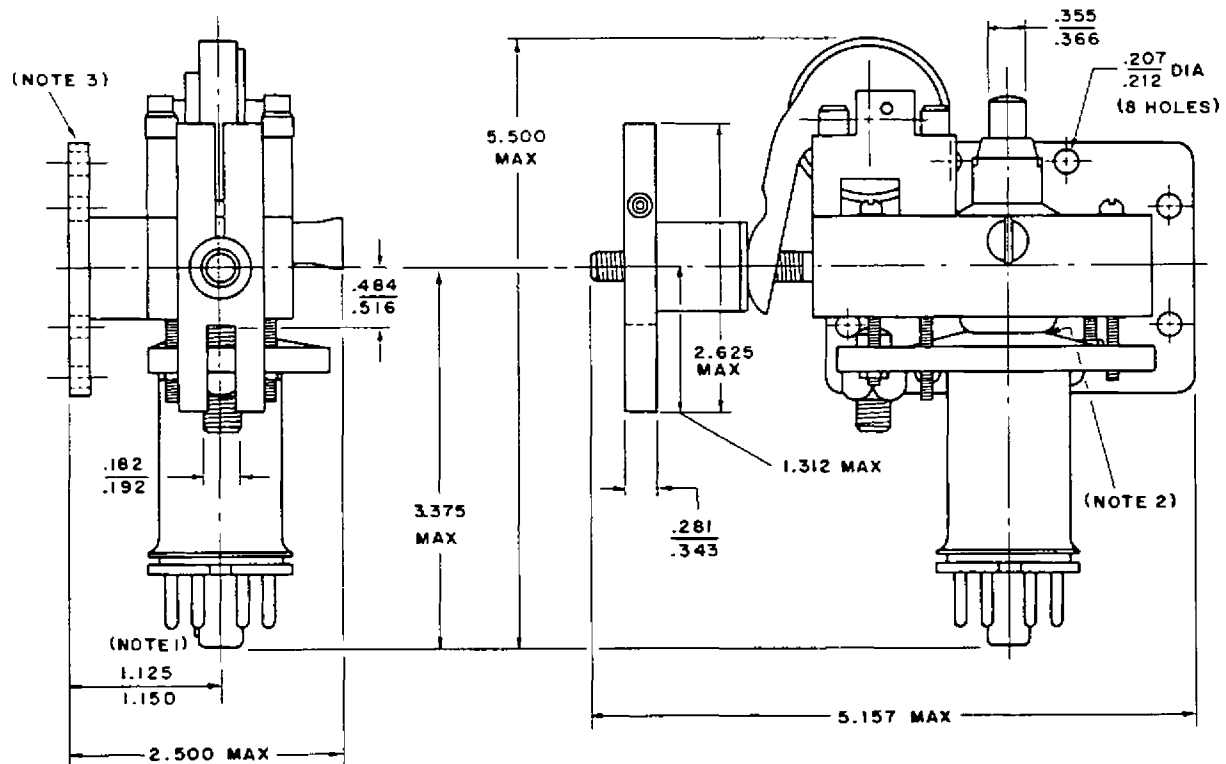
## TYPICAL OPERATION (Any Frequency 4600-5000 Mc) (Cont'd)

Characteristics	Min.	Max.
Cathode Current	-	100 mA <sub>dc</sub>
Power Output	1	- W
Electronic Tuning Range (Between Half Power Points)	25	- Mc
Modulation Sensitivity (±4 Mc at 60 cps)	220	400 kc/v
Modulation Sensitivity Variation	-	95 kc/v
Reflector Voltage Linearity (Departure from Straight Line)	0	±15 V <sub>dc</sub>
Pulling Factor (VSWR = 1.5, all Phases)	-	12.5 Mc
Temperature Coefficient (Ambient Temperature = 80° to 30°C)	0	±80 kc/°C

## NOTES:

1. Prorated warranted life when operated within ratings is 2000 hours. For maximum shelf life tube must be operated for one hour every six months.
2. Adequate air cooling shall be provided at all times during operation so that the temperature measured at the test point shown on the outline drawing will not exceed 125°C.
3. Adjust for maximum power output.

OUTLINE



OUTLINE NOTES:

1. Dimension applies from flange surface plane to center of end of base guide lug.
2. Temperature test point.
3. Wave guide flange mates with airtron #54626.