

PHILIPS „MINIWATT“
EH 2
HEXODE

EH 2

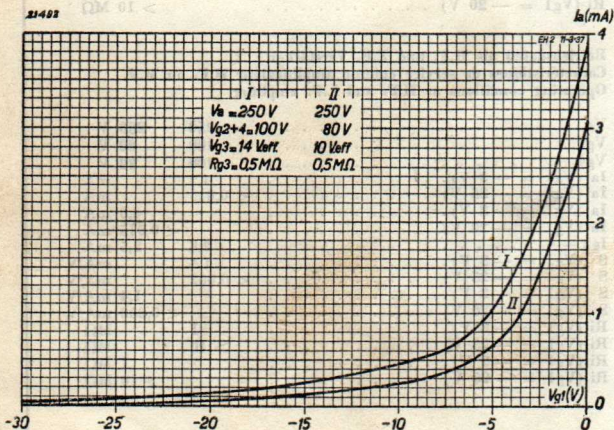
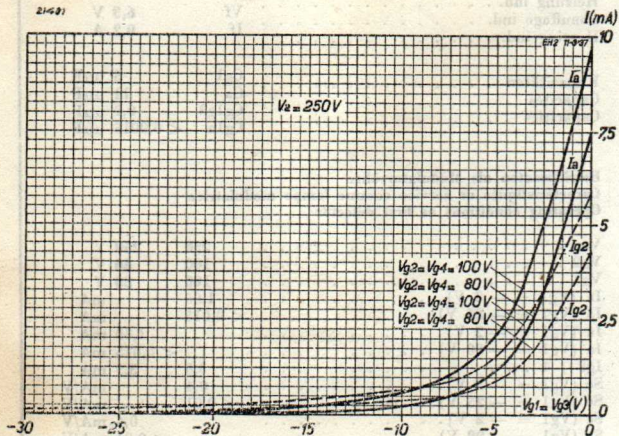
Heizung ind.	Vf	6,3 V
Chauffage ind.	If	0,2 A
Heating ind.		
Kapazitäten	Cg1	5 $\mu\mu\text{F}$
Capacités	Ca	11 $\mu\mu\text{F}$
Capacities	Cg1g3	0,2 $\mu\mu\text{F}$
	Cg1a	< 0,0015 $\mu\mu\text{F}$

Betriebsdaten als Modulatorröhre
Caractéristiques de service comme lampe modulatrice
Operating conditions as first detector

Va	250	250 V
Vg2	100	80 V
Vg4	100	80 V
Ia (Vg1 = - 3 V)	1,85	mA
Ia (Vg1 = - 25 V)	< 0,015	mA
Ia (Vg1 = - 2 V)		1,80 mA
Ia (Vg1 = - 20 V)		< 0,015 mA
Ig2 + 4	3,8	3,5 mA
Sc (Vg1 = - 3 V)	0,4	mA/V
Sc (Vg1 = - 25 V)	< 0,01	mA/V
Sc (Vg1 = - 2 V)		0,4 mA/V
Sc (Vg1 = - 20 V)		< 0,01 mA/V
Ri (Vg1 = - 3 V)	2	M Ω
Ri (Vg1 = - 25 V)	> 10	M Ω
Ri (Vg1 = - 3 V)		2 M Ω
Ri (Vg1 = - 20 V)		> 10 M Ω

Betriebsdaten als H.F. und Z.F. Verstärker
Caractéristiques de service comme amplificateur H.F. ou M.F.
Operating conditions as H.F. and L.F. amplifier.

Va	250	250 V
Vg2	100	80 V
Vg4	100	80 V
Ia (Vg1 = - 3 V)	4,2	mA
Ia (Vg1 = - 25 V)	< 0,015	mA
Ia (Vg1 = - 2 V)		4,0 mA
Ia (Vg1 = - 20 V)		< 0,015 mA
Ig2 + 4	2,8	2,5 mA
S (Vg1 = - 3 V)	1,4	mA/V
S (Vg1 = - 25 V)	< 0,002	mA/V
S (Vg1 = - 2 V)		1,4 mA/V
S (Vg1 = - 20 V)		< 0,002 mA/V
Ri (Vg1 = - 3 V)	1	M Ω
Ri (Vg1 = - 25 V)	> 10	M Ω
Ri (Vg1 = - 3 V)		1 M Ω
Ri (Vg1 = - 20 V)		> 10 M Ω

EH 2**PHILIPS „MINIWATT”
EH 2
HEXODE**

Grenzdaten

Limites fixées pour les caractéristiques

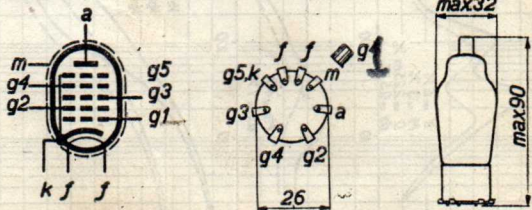
Limit-data

V _{ao} max	550 V
V _a max	250 V
W _a max	1,5 W
V _{g20} max	400 V
V _{g2} max	125 V
W _{g2} max	0,5 W
V _{g40} max	400 V
W _{g4} max	0,5 W
V _{g1} max (I _{g1} = 0,3 μA)	-1,3 V
V _{g3} max (I _{g1} = 0,3 μA)	-1,3 V
I _{g2+4} min	1,9 mA
I _{g2+4} max	3,7 mA
I _k max	10 mA
R _{g1} max	2,5 MΩ
R _{g3} max	2,5 MΩ
R _{fk} max	5000 Ω
V _{fk} max	50 V

Elektrodenanordnung und Sockelschaltung

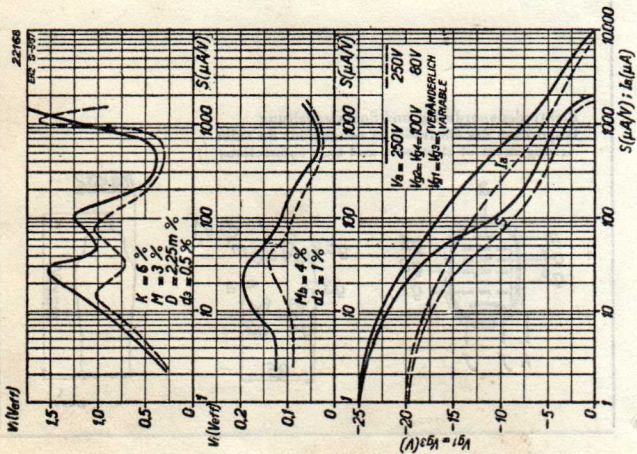
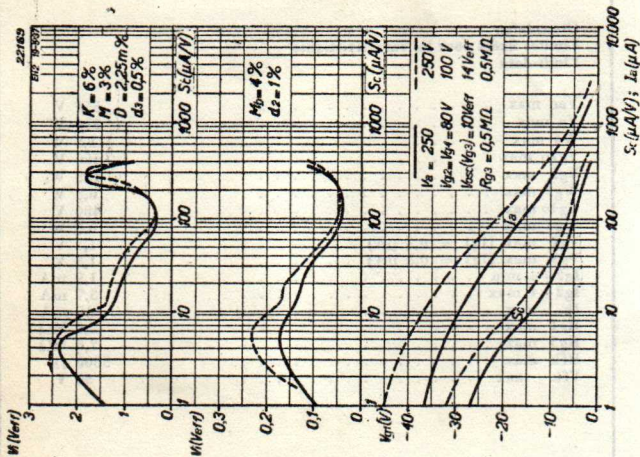
Disposition des electrodes et connexions du culot

Arrangement of electrodes and base connections



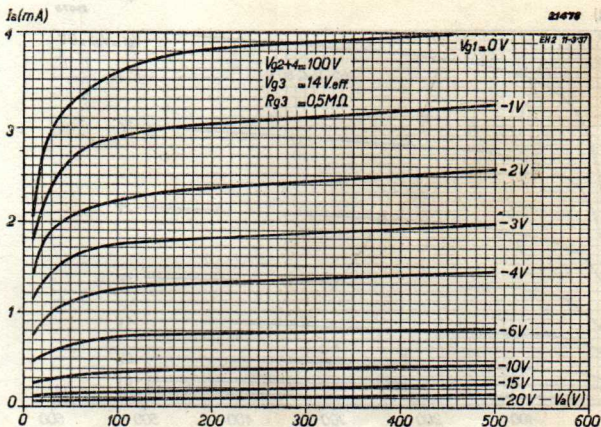
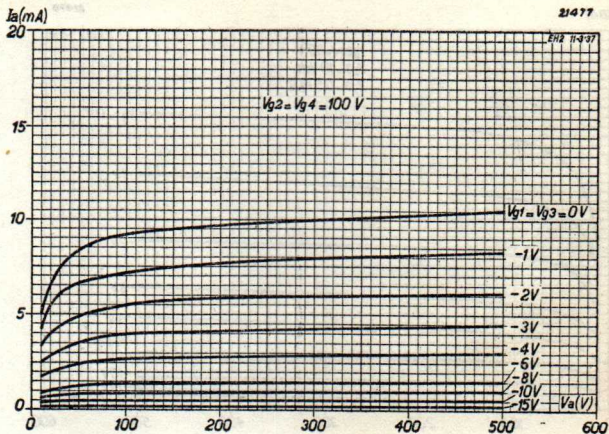
EH 2

**PHILIPS „MINIWATT”
EH 2
HEXODE**



PHILIPS „MINIWATT”
EH 2
HEXODE

EH 2



EH 2**PHILIPS „MINIWATT”
EH 2
HEXODE**